

Evaluation of intramitochondrial ATP levels identifies G0/G1 switch gene 2 as a positive regulator of oxidative phosphorylation

Hidetaka Kioka^{a,b,1}, Hisakazu Kato^{a,1}, Makoto Fujikawa^c, Osamu Tsukamoto^a, Toshiharu Suzuki^{d,e}, Hiromi Imamura^f, Atsushi Nakano^{a,g}, Shuichiro Higo^{a,b}, Satoru Yamazaki^h, Takashi Matsuzaki^b, Kazuaki Takafujiⁱ, Hiroshi Asanuma^j, Masanori Asakura^g, Tetsuo Minamino^b, Yasunori Shintani^a, Masasuke Yoshida^e, Hiroyuki Noji^k, Masafumi Kitakaze^g, Issei Komuro^{b,l}, Yoshihiro Asano^{a,b,2}, and Seiji Takashima^{a,2}

Departments of ^aMedical Biochemistry and ^bCardiovascular Medicine and ^lCenter for Research Education, Osaka University Graduate School of Medicine, Osaka 565-0871, Japan; ^cDepartment of Biochemistry, Faculty of Pharmaceutical Science, Tokyo University of Science, Chiba 278-8510, Japan; ^dChemical Resources Laboratory, Tokyo Institute of Technology, Yokohama 226-8503, Japan; ^eDepartment of Molecular Bioscience, Kyoto Sangyo University, Kyoto 603-8555, Japan; ^fThe Hakubi Center for Advanced Research and Graduate School of Biostudies, Kyoto University, Kyoto 606-8501, Japan; Departments of ^gClinical Research and Development and ^hCell Biology, National Cerebral and Cardiovascular Center Research Institute, Osaka 565-8565, Japan; ⁱDepartment of Cardiovascular Science and Technology, Kyoto Prefectural University School of Medicine, Kyoto 602-8566, Japan; and ^kDepartment of Applied Chemistry, School of Engineering and ^lDepartment of Cardiovascular Medicine, Graduate School of Medicine, University of Tokyo, Tokyo 113-8656, Japan

Edited by Gottfried Schatz, University of Basel, Reinach, Switzerland, and approved November 19, 2013 (received for review October 7, 2013)

The oxidative phosphorylation (OXPHOS) system generates most of the ATP in respiring cells. ATP-depleting conditions, such as hypoxia, trigger responses that promote ATP production. However, how OXPHOS is regulated during hypoxia has yet to be elucidated. In this study, selective measurement of intramitochondrial ATP levels identified the hypoxia-inducible protein G0/G1 switch gene 2 (G0s2) as a positive regulator of OXPHOS. A mitochondria-targeted, FRET-based ATP biosensor enabled us to assess OXPHOS activity in living cells. Mitochondria-targeted, FRET-based ATP biosensor and ATP production assay in a semi-intact cell system revealed that G0s2 increases mitochondrial ATP production. The expression of G0s2 was rapidly and transiently induced by hypoxic stimuli, and G0s2 interacts with OXPHOS complex V (F₀F₁-ATP synthase). Furthermore, physiological enhancement of G0s2 expression prevented cells from ATP depletion and induced a cellular tolerance for hypoxic stress. These results show that G0s2 positively regulates OXPHOS activity by interacting with F₀F₁-ATP synthase, which causes an increase in ATP production in response to hypoxic stress and protects cells from a critical energy crisis. These findings contribute to the understanding of a unique stress response to energy depletion. Additionally, this study shows the importance of assessing intramitochondrial ATP levels to evaluate OXPHOS activity in living cells.

energy metabolism | live-cell imaging

Maintaining cellular homeostasis and activities requires a stable energy supply. Most eukaryotic cells generate ATP as their energy currency mainly through the mitochondrial oxidative phosphorylation (OXPHOS) system. The OXPHOS system consists of five large protein complex units (i.e., complexes I–V), comprising more than 100 proteins. In this system, oxygen (O₂) is essential as the terminal electron acceptor for complex IV to finally produce the proton-motive force that drives the ATP-generating molecular motor complex V (F₀F₁-ATP synthase).

Hypoxia causes the depletion of intracellular ATP and triggers adaptive cellular responses to help maintain intracellular ATP levels and minimize any deleterious effects of energy depletion. Although the metabolic switch from mitochondrial respiration to anaerobic glycolysis is widely recognized (1–4), several recent reports have shown that hypoxic stimuli unexpectedly increase OXPHOS efficiency as well (5–7). In other words, cells have adaptive mechanisms to maintain intracellular ATP levels by enhancing OXPHOS, particularly in the early phase of hypoxia, in which the O₂ supply is limited but still remains. However, the mechanism by which OXPHOS is regulated during this early hypoxic phase is still not fully understood.

Revealing the mechanism of this fine-tuned regulation of OXPHOS requires accurate and noninvasive measurements of OXPHOS activity. Although researchers have established methods to measure OXPHOS activity, precise measurement, especially in living cells, is still difficult. Measuring the intracellular ATP concentration is one of the most commonly used methods for evaluating OXPHOS activity. However, there are two major problems with this method. First, the intracellular ATP concentration does not always accurately reflect OXPHOS activity, because it can also be affected by glycolytic ATP production, cytosolic ATPases, and ATP buffering enzymes, such as creatine kinase and adenylate kinase (8). Second, because measurements of the ATP concentration by chromatography (9), MS (10), NMR (11), or luciferase assays (12) are based on cell extract analysis, these methods cannot be used to measure the serial ATP concentration changes in living cells in real time.

In this study, we overcame these problems by the selective measurement of the intramitochondrial matrix ATP concentration ([ATP]_{mito}) in living cells. In the final step of OXPHOS, ATP is produced not in the cytosol but in the mitochondrial matrix. Therefore, we hypothesized that a selectively measuring [ATP]_{mito} is suitable for the highly sensitive evaluation of cellular ATP production by OXPHOS. In fact, real-time evaluation of both [ATP]_{mito} and the cytosolic ATP concentration ([ATP]_{cyto}) in living cells revealed that [ATP]_{mito} reflected OXPHOS activity with far more sensitivity than [ATP]_{cyto}. Using this fine method, we found that G0/G1 switch gene 2 (G0s2), a hypoxia-induced

Significance

We developed a sensitive method to assess the activity of oxidative phosphorylation in living cells using a FRET-based ATP biosensor. We then revealed that G0/G1 switch gene 2, a protein rapidly induced by hypoxia, increases mitochondrial ATP production by interacting with F₀F₁-ATP synthase and protects cells from a critical energy crisis.

Author contributions: Y.A. and S.T. designed research; H. Kioka, H. Kato, O.T., and A.N. performed research; M.F., T.S., H.I., S.H., S.Y., T. Matsuzaki, K.T., H.A., M.A., T. Minamino, Y.S., M.Y., H.N., M.K., and I.K. contributed new reagents/analytic tools; H. Kioka and H. Kato analyzed data; and Y.A. and S.T. wrote the paper.

The authors declare no conflict of interest.

This article is a PNAS Direct Submission.

¹H. Kioka and H. Kato contributed equally to this work.

²To whom correspondence may be addressed. E-mail: asano@cardiology.med.osaka-u.ac.jp or takasima@cardiology.med.osaka-u.ac.jp.

This article contains supporting information online at www.pnas.org/lookup/suppl/doi:10.1073/pnas.1318547111/-DCSupplemental.

protein in cardiomyocytes, increases OXPHOS activity. G0s2 interacted with F_0F_1 -ATP synthase and increased the ATP production rate. Our results suggest that hypoxia-induced protein G0s2 is a positive regulator of OXPHOS and protects cells by preserving ATP production, even under hypoxic conditions.

Results

Establishment of a Sensitive Method to Assess OXPHOS Activity in Living Cells. To elucidate the mechanism by which OXPHOS is regulated under hypoxia, it is essential to establish a sensitive method for assessing OXPHOS activity in living cells. For this purpose, we used an ATP indicator based on ϵ -subunit for analytical measurements (ATeam), which is an ATP-sensing FRET-based indicator (13). We introduced this ATP biosensor into cardiomyocytes that possess an abundance of mitochondria and produce the highest levels of ATP among all primary cells (14, 15). The ATeam assay can measure both $[ATP]_{cyto}$ (i.e., the Cyto-ATeam assay) and $[ATP]_{mito}$ when a duplex of the mitochondrial targeting signal of cytochrome *c* oxidase subunit VIII is attached to the indicator (i.e., the Mit-ATeam assay). In this case, the YFP/CFP emission ratio of the ATeam fluorescence represents the ATP concentration in each compartment. Interestingly, the Mit-ATeam assay was a far more sensitive method than the Cyto-ATeam assay in determining OXPHOS activity in living cells. For example, a very low dose of oligomycin A (0.01 $\mu\text{g}/\text{mL}$), a specific OXPHOS complex V (F_0F_1 -ATP synthase) inhibitor, greatly reduced the YFP/CFP emission ratio of the Mit-ATeam fluorescence that represents $[ATP]_{mito}$ within 10 min (Fig. 1 *A*, Upper and *B* and Movie S1). In contrast, the same dose of oligomycin A resulted in a slight and slow decline of the YFP/CFP emission ratio of Cyto-ATeam fluorescence (Fig. 1 *A*, Lower and *B* and Movie S1). The same phenomenon was observed when the cells were exposed to hypoxia, which suppresses the activity of OXPHOS complex IV (cytochrome *c* oxidase). Again, $[ATP]_{mito}$ decreased more markedly than $[ATP]_{cyto}$ during 2.5 h of hypoxia (Fig. 1 *C* and *D* and Movie S2). These results indicate that the Mit-ATeam assay is far more sensitive for measuring the activity of OXPHOS than the Cyto-ATeam

assay. In addition, OXPHOS inhibition decreased the YFP/CFP emission ratio of the Mit-ATeam fluorescence of HeLa cells as well as cardiomyocytes (Fig. S1), suggesting the broad applicability of this assay. Therefore, we used Mit-ATeam for the assessment of the OXPHOS activity in living cells.

Hypoxia-Induced Gene G0s2 Affects the Intramitochondrial ATP Concentration. The expression of genes involved in OXPHOS regulation is considered to be up-regulated in the early phase of hypoxia. Thus, to find unique OXPHOS regulators, we focused on the rapidly induced genes in response to hypoxic stimulation. We compared the gene expression profiles of cultured rat cardiomyocytes at three different time points during hypoxic conditions (0, 2, and 12 h) (Fig. S24). The expression of well-known hypoxia-induced genes, such as VEGF- α and hexokinase 2 mRNA (16, 17), was slightly up-regulated at 2 h and further enhanced at 12 h of hypoxia. In contrast, three other genes (*Adams1*, *Cdkn3*, and *G0s2*) underwent rapid increases in expression at 2 h but declined at 12 h of sustained hypoxia (Fig. S2 *B* and *C*). This rapid and transient time course of expression implies that these three genes may play distinct regulatory roles, especially in the early hypoxic phase, in which oxygen is limited but still available. To examine whether these genes are involved in the regulation of OXPHOS activity, we knocked down these genes by shRNA (see Fig. S74) and examined $[ATP]_{mito}$ using the Mit-ATeam assay. In this experiment, $[ATP]_{mito}$ in cardiomyocytes treated with shRNA for G0s2 clearly declined within 24 h compared with the control cardiomyocytes (Fig. 24 and Movie S3). In addition, the time course of ATP decline was in agreement with the time course of G0s2 depletion (Fig. 24 and Fig. S34). Importantly, the overexpression of G0s2 restored normal ATP levels (Fig. 2 *B* and *C*), and again, the Cyto-ATeam assay could not detect a significant effect of G0s2 knockdown within this time frame (Fig. S3B and Movie S4). These findings imply that mitochondrial ATP production through OXPHOS was inhibited by G0s2 ablation. We confirmed that the mRNA and protein levels of G0s2 both increased after 2–6 h of hypoxia and then declined after 12 h of hypoxia (Fig. 2 *D* and *E*). G0s2 was first reported as a gene with

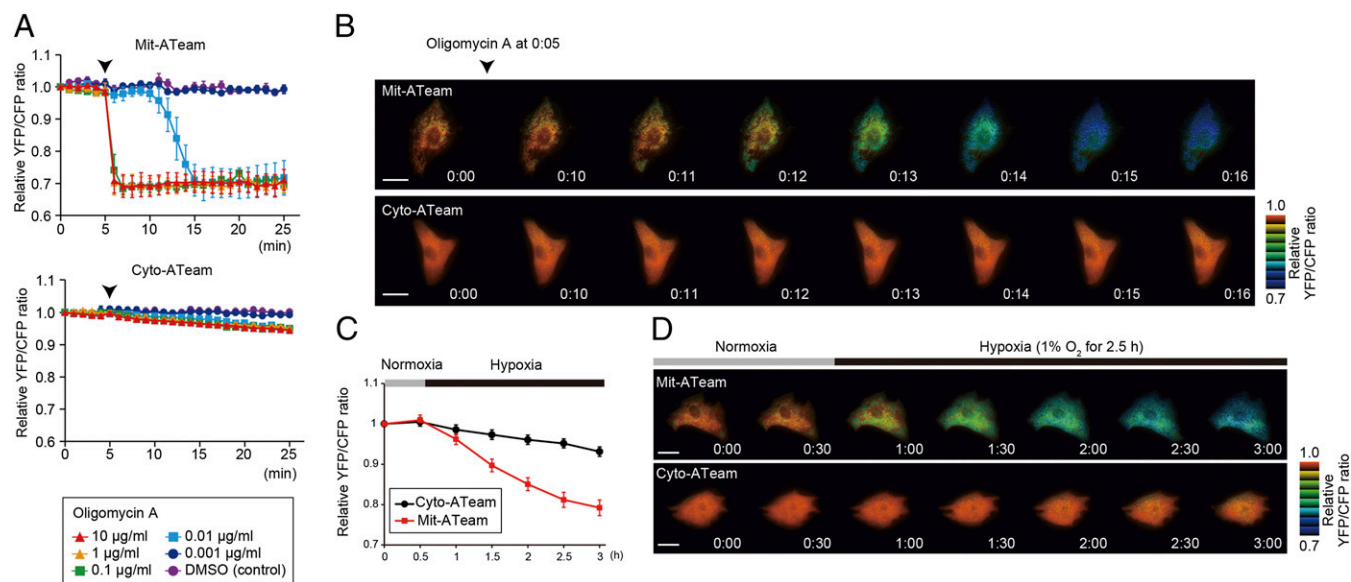


Fig. 1. Establishment of a sensitive method to assess OXPHOS activity in living cells. (A) YFP/CFP emission ratio plots of (Upper) Mit-ATeam and (Lower) Cyto-ATeam fluorescence in cardiomyocytes. Various concentrations (0.001, 0.01, 0.1, 1, and 10 $\mu\text{g}/\text{mL}$) of oligomycin A or DMSO (control) were added at 5 min (arrowhead; $n = 3$). (B) Representative sequential YFP/CFP ratiometric pseudocolored images of (Upper) Mit-ATeam and (Lower) Cyto-ATeam in cardiomyocytes. Oligomycin A (0.01 $\mu\text{g}/\text{mL}$) was added at 5 min. (Scale bars: 20 μm .) (C) YFP/CFP emission ratio plots of Mit-ATeam and Cyto-ATeam fluorescence in cardiomyocytes ($n = 10$). (D) Representative sequential YFP/CFP ratiometric pseudocolored images of (Upper) Mit-ATeam and (Lower) Cyto-ATeam in cardiomyocytes. Cells were exposed to 1% hypoxia from the time point 30 min. All of the measurements were normalized to the YFP/CFP emission ratio at 0 min. Data are represented as the means \pm SEMs. (Scale bars: 20 μm .)

Conversely, G0s2-Flag was coimmunoprecipitated with F_0F_1 -ATP synthase (Fig. S4C). G0s2-Flag was also found to be associated with the F_0F_1 -ATP synthase in 293T and HeLa cells (Fig. S4C). Both coimmunoprecipitation using an anti-G0s2 antibody and a reciprocal immunoprecipitation revealed that endogenous G0s2 interacts with F_0F_1 -ATP synthase, whereas none of the proteins in complexes I–IV or adenine nucleotide translocase 1 (ANT1; also referred to as ADP/ATP carrier) were coimmunoprecipitated with G0s2 (Fig. 4B and C).

Given that the G0s2 protein contains an evolutionarily conserved amino terminus and one hydrophobic domain (HD) (19), we created three G0s2 partial deletion mutants to identify the domain in G0s2 that is important for binding to F_0F_1 -ATP synthase (Fig. S4D). Among these mutants, G0s2 Δ C and G0s2 Δ N but not G0s2 Δ HD bound to the F_0F_1 -ATP synthase complex (Fig. 4D and Fig. S4E and F). Furthermore, we confirmed that G0s2 directly interacts with F_0F_1 -ATP synthase in an in vitro pull-down assay using a recombinant maltose-binding protein–fused G0s2 protein and purified F_0F_1 -ATP synthase from bovine heart mitochondria (Fig.

S5). Immunocytochemical analysis revealed that endogenous G0s2 colocalized with the β -subunit of F_0F_1 -ATP synthase (Fig. 4E). The knockdown of G0s2 expression by shRNA abolished G0s2 staining (Figs. S6 and S7A), indicating that both antibodies used for immunostaining specifically recognize G0s2. These data suggest that G0s2 interacts with the F_0F_1 -ATP synthase complex through its HD in mitochondria and regulates OXPHOS activity.

G0s2 Increases Mitochondrial ATP Production Rate. $[ATP]_{mito}$ is mainly determined by the rate of ATP synthesis by F_0F_1 -ATP synthase and ATP/ADP exchange by the ATP/ADP translocase ANT1. This theory means that the increased $[ATP]_{mito}$ observed in the G0s2-overexpressing cells may result from the increased ATP synthesis and/or decreased ATP/ADP exchange, although G0s2 did not interact with ANT1 (Fig. 4B). To resolve this issue and directly measure the rate of ATP production in mitochondria, we used a semiintact cell system called the mitochondrial activity of streptolysin O permeabilized cells (MASC) assay (25). In this assay, we permeabilized the plasma membrane to wash out any cytosolic components, such as creatine and glycolytic substrates, but left the mitochondria intact. Furthermore, we treated the cells with P^1 , P^5 -di(adenosine-5') pentaphosphate to inhibit the activity of adenylate kinase. These steps allowed us to measure the ATP production rate mostly from OXPHOS, with a minimal contribution of ATP buffering systems in the cytosol. The MASC assay was suitable for accurate measurement of mitochondrial ATP production rate, because mitochondria in this semiintact cell system suffered much smaller damage than the isolated mitochondria in the conventional method. Surprisingly, in the MASC assay, the ATP production rate markedly increased when G0s2 was expressed in HeLa cells that lacked endogenous G0s2 (Fig. 5A). In cardiomyocytes, shRNA-mediated G0s2 knockdown decreased the ATP production rate in mitochondria, and the expression of G0s2 WT but not G0s2 Δ HD could restore the ATP production rate (Fig. 5B and Fig. S7A). In both cells, complete inhibition of ATP production by oligomycin A indicated that the observed ATP synthesis was catalyzed by OXPHOS but not other metabolism (Fig. 5A and B).

Next, to evaluate the physiological role of G0s2, we examined whether endogenous G0s2 induced by hypoxia could enhance the ATP production rate. Cardiomyocytes were pretreated with hypoxia for 4 h, during which G0s2 expression was largely induced. We then evaluated the ATP production rate of both hypoxia-pretreated and nontreated cardiomyocytes under room air conditions. Even under these equivalent normoxic conditions, hypoxia-pretreated cardiomyocytes produced ATP faster than nontreated control cardiomyocytes (Fig. 5C and Fig. S7B). G0s2 knockdown attenuated this increase in the rate of ATP production, indicating that the enhanced ATP production rate resulting from hypoxia pretreatment primarily depends on endogenous G0s2 induction. This increased G0s2 expression was essential for cell survival, because G0s2-depleted cells died earlier than control cells under conditions of hypoxic stress (Fig. 5D).

Furthermore, to assess the effect of G0s2 on cellular respiration, we continuously measured the oxygen consumption rate (OCR) using an XF96 Extracellular Flux Analyzer. G0s2 knockdown decreased the basal OCR of cardiomyocytes, most likely because of the decreased activity of ATP synthesis (Fig. 5E and F). In contrast, the proton leakage of the mitochondrial inner membrane and the maximum respiratory capacity of OXPHOS complexes I–IV were unaffected by G0s2 ablation (Fig. 5E and F). These data show that G0s2 knockdown reduced respiration caused by ATP synthesis without affecting respiration caused by proton leakage, nonmitochondrial respiration, or the maximal respiration capacity.

All these findings indicate that G0s2 enhances the mitochondrial ATP production rate by increasing the activity of F_0F_1 -ATP synthase.

Discussion

In this study, we showed that G0s2 kinetically increased OXPHOS activity through direct binding to F_0F_1 -ATP synthase. Our previous

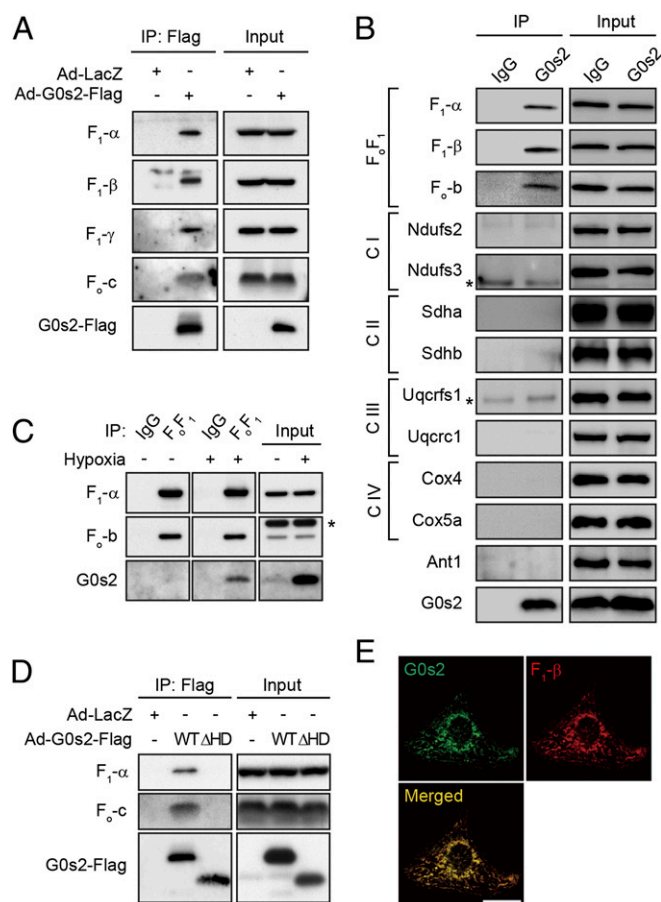


Fig. 4. G0s2 interacts with the F_0F_1 -ATP synthase in mitochondria. (A) Immunoprecipitation (IP) of G0s2-Flag in cardiomyocytes. Cell lysates from cardiomyocytes expressing G0s2-Flag or LacZ were immunoprecipitated with an anti-Flag antibody. (B) IP of endogenous G0s2 in cardiomyocytes. Endogenous G0s2 was induced by hypoxia and immunoprecipitated using an anti-G0s2 antibody. C, OXPHOS complex; F_0F_1 , F_0F_1 -ATP synthase. *IgG light chain. (C) IP of F_0F_1 -ATP synthase in cardiomyocytes under normoxic or hypoxic conditions. Cell lysates from cardiomyocytes cultured under normoxia or hypoxia for 4 h were immunoprecipitated with an antibody against the whole F_0F_1 -ATP synthase complex or a control IgG. *Nonspecific band. (D) IP of G0s2 mutants expressed in cardiomyocytes. Cell lysates were immunoprecipitated with an anti-Flag antibody. (E) Immunostained images of hypoxia-stimulated (4 h) cardiomyocytes with anti-G0s2 (green) and anti- F_0F_1 -ATP synthase β -subunit (red) antibodies. (Scale bars: 20 μ m.)

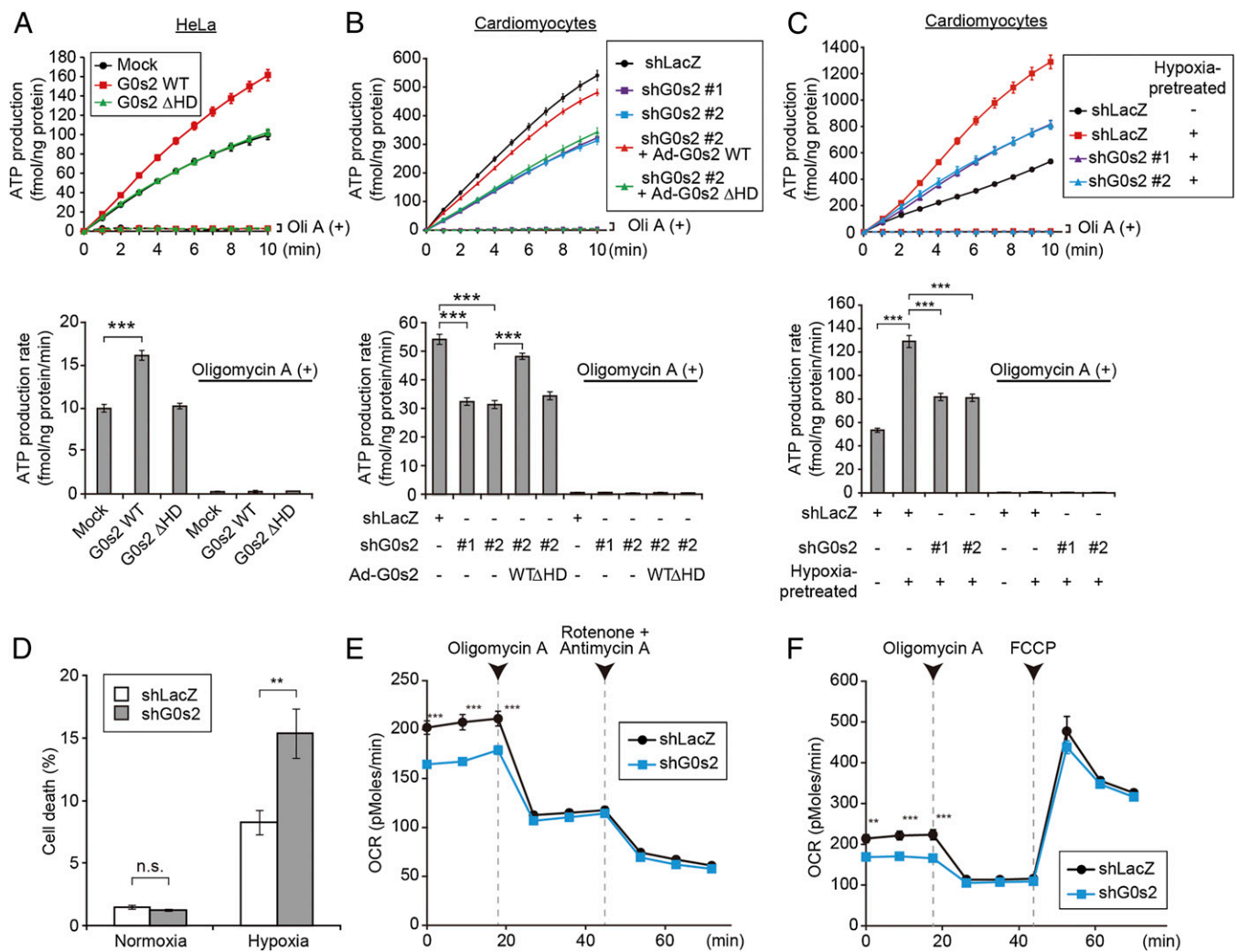


Fig. 5. G0s2 enhances the mitochondrial ATP production rate. (A and B) MASC assay of (A) permeabilized HeLa cells expressing the indicated plasmids or (B) cardiomyocytes expressing the indicated adenovirus in the presence (dotted lines) or absence (solid lines) of 1 μ M oligomycin A (Oli A). *Upper* shows the ATP production plots, and *Lower* shows the mean ATP production rates between 0 and 10 min. (A) $n = 12$. (B) Solid lines, $n = 12$; dotted lines, $n = 8$. (C) MASC assay of permeabilized cardiomyocytes pretreated with hypoxia. Cells expressing the indicated adenovirus were pretreated with or without hypoxia for 4 h. After the pre-treatment, the cells were permeabilized under room air conditions followed by MASC assay in the presence (dotted lines; $n = 8$) or absence (solid lines; $n = 12$) of 1 μ M Oli A. *Upper* shows the ATP production plot, and *Lower* shows the mean ATP production rate between 0 and 10 min. (D) The bar graph represents the cell viability of G0s2-depleted cardiomyocytes under hypoxic conditions. Cardiomyocytes expressing shLacZ or shG0s2 (#2) were cultured under normoxic or hypoxic conditions for 18 h. (E and F) The OCR in cardiomyocytes expressing shLacZ and shG0s2 (#2) under basal conditions and in response to the indicated mitochondrial inhibitors ($n = 8$). FCCP, carbonyl cyanide-4-(trifluoromethoxy)-phenylhydrazone. Data are represented as the means \pm SEMs. n.s., not significant. ** $P < 0.01$; *** $P < 0.001$.

studies of F_0F_1 -ATP synthase have revealed that this enzyme has a specific structure that connects two molecular nanomotors that synchronize with each other to produce ATP (26–30). These physically distinct structures suggest that a specific activating factor for F_0F_1 -ATP synthase must exist. Combined with the findings from this study, we hypothesize that G0s2 may lower the activation barrier of the F_0F_1 -ATP synthase nanomotor and enhance the ATP production rate with the equivalent proton motive driving force (PMF; i.e., the sum of the membrane potential and the pH gradient). Activation barriers might be generated by various factors, such as friction between the stator and rotor of F_0F_1 -ATP synthase, physical and electrical resistance to proton transport through the channel, and the existence of rotary blockers such as the bacterial ϵ -subunit and cyclophilin D (31). The increased ATP production rate caused by G0s2 overexpression observed in the MASC assay supports this hypothesis, because the PMF in the initial phase of this assay should be the same. If this hypothesis is true, even with reduced PMF, cells that express G0s2 should produce ATP faster than cells that express

little or no G0s2. In fact, G0s2 overexpression attenuated the decline of $[ATP]_{mito}$ under hypoxic conditions that reduced the PMF. Precise real-time measurement of the PMF is currently difficult, but these hypotheses might be proven in future studies. Kinetically faster ATP production should accompany greater consumption of both O_2 and PMF; however, our results suggest that preserving ATP production is more beneficial than preserving PMF for cell viability, particularly when the O_2 supply is restricted but still exists. The transience of endogenous G0s2 expression induced by hypoxia might serve to protect tissues in the early phase of energy crisis. There may be specific mechanisms to decrease G0s2 expression under prolonged ischemia that have yet to be identified. Another possible mechanism by which G0s2 could increase the ATP production rate is that G0s2 increases the F_0F_1 coupling efficiency of F_0F_1 -ATP synthase. However, this hypothesis is less likely, because G0s2 altered the oxygen consumption rate to increase the ATP production rate. Although this uncoupling phenomenon has rarely been reported for mammalian mitochondrial F_0F_1 -ATP synthase, we cannot completely eliminate the possibility that intrinsically

uncoupled F_0F_1 -ATP synthase exists, because we could not accurately measure the amount of uncoupled F_0F_1 -ATP synthase in intact cells.

G0s2 was first identified in cultured monocytes during the drug-induced cell cycle transition from G0 to G1 phase (18, 32). A limited number of studies have implied that G0s2 is involved in cell proliferation (33), differentiation (19), apoptosis (34), inflammation (35), and lipid metabolism (36) in various cellular settings. Moreover, G0s2 was reported to localize to the cytosol (33), endoplasmic reticulum (19), mitochondria (34), or the surface of lipid droplets (36). How G0s2 distinguishes these multiple functions is still not clear. In our hands, G0s2 is always localized to mitochondria, which was shown by immunostaining with two antibodies against different epitopes of G0s2 (Fig. S6). Complete depletion of mitochondrial staining by G0s2 knockdown strongly suggests the specific localization of G0s2 to mitochondria. We also showed that G0s2 specifically bound to mitochondrial F_0F_1 -ATP synthase but not other OXPHOS protein complexes and functionally regulated OXPHOS activity. Together, these data suggest that G0s2 acts in the mitochondria. However, different cellular conditions may change the localization and role of G0s2. Additionally, G0s2-mediated changes in ATP metabolism may possibly affect the lipid metabolism or cellular proliferation. Additional studies will reveal the functional mechanisms by which G0s2 exerts these multiple functions in different cellular conditions.

In this study, we evaluated $[ATP]_{mito}$ and $[ATP]_{cyto}$ separately using FRET-based ATP biosensors in living cells. This dual evaluation revealed that $[ATP]_{mito}$ reflected mitochondrial ATP production with much greater sensitivity than $[ATP]_{cyto}$ (Fig. 1 and Movies S1 and S2). Because $[ATP]_{cyto}$ is strongly influenced by the activity of various cytosolic ATP hydrolytic enzymes and

ATP buffering enzymes, $[ATP]_{cyto}$ does not always reflect the ATP availability that determines cellular function.

Taken together, our results indicate that G0s2 is a positive regulator of OXPHOS that works to increase the mitochondrial ATP production rate even under hypoxic conditions. Therefore, enhancing the level and function of G0s2 could be beneficial for hypoxia- and mitochondria-related disorders, such as ischemic diseases, metabolic diseases, and cancer.

Materials and Methods

Cells were infected with adenovirus encoding FRET-based ATP indicators AT1.03 or mit-AT1.03 to measure changes in cytosolic or mitochondrial ATP concentrations, respectively. Image acquisitions and FRET analyses were performed as described previously with some modifications (13). For the control of oxygen concentration during time-lapse imaging, digital gas mixer for stage-top incubator GM8000 (Tokai Hit) was used to create hypoxic (1% O_2) or normoxic (20% O_2) condition. Additional methods are found in *SI Materials and Methods*.

ACKNOWLEDGMENTS. We thank M. Murata for helpful discussions and advice, H. Miyagi (Olympus Co. Ltd.) for technical advice regarding microscopy, T. Miyazaki (Cyclex Co. Ltd.) for making antibodies, S. Ikezawa and A. Ogai for technical assistance, K. Tanaka for help with the purification of bovine F_0F_1 -ATP synthase, and Y. Okada and H. Fujii for secretarial support. This research was supported by the Japan Society for the Promotion of Science through the Funding Program for Next Generation World-Leading Researchers (NEXT Program) initiated by the Council for Science and Technology Policy; grants-in-aid from the Ministry of Health, Labor, and Welfare-Japan; and grants-in-aid from the Ministry of Education, Culture, Sports, Science, and Technology-Japan. This research was also supported by grants from Takeda Science Foundation, Japan Heart Foundation, Japan Cardiovascular Research Foundation, Japan Intractable Diseases Research Foundation, Japan Foundation of Applied Enzymology, Japan Medical Association, Uehara Memorial Foundation, Mochida Memorial Foundation, Banyu Foundation, Naito Foundation, Inoue Foundation for Science, Osaka Medical Research foundation for Intractable Diseases, Ichiro Kanehara Foundation, and Showa Houkoukai.

- Kim JW, Tchernyshyov I, Semenza GL, Dang CV (2006) HIF-1-mediated expression of pyruvate dehydrogenase kinase: A metabolic switch required for cellular adaptation to hypoxia. *Cell Metab* 3(3):177–185.
- Papandreou I, Cairns RA, Fontana L, Lim AL, Denko NC (2006) HIF-1 mediates adaptation to hypoxia by actively downregulating mitochondrial oxygen consumption. *Cell Metab* 3(3):187–197.
- Semenza GL (2012) Hypoxia-inducible factors in physiology and medicine. *Cell* 148(3):399–408.
- Semenza GL, et al. (1996) Hypoxia response elements in the aldolase A, enolase 1, and lactate dehydrogenase A gene promoters contain essential binding sites for hypoxia-inducible factor 1. *J Biol Chem* 271(51):32529–32537.
- Chen YC, et al. (2012) Identification of a protein mediating respiratory supercomplex stability. *Cell Metab* 15(3):348–360.
- Fukuda R, et al. (2007) HIF-1 regulates cytochrome oxidase subunits to optimize efficiency of respiration in hypoxic cells. *Cell* 129(1):111–122.
- Strogolova V, Furness A, Robb-McGrath M, Garlich J, Stuart RA (2012) Rcf1 and Rcf2, members of the hypoxia-induced gene 1 protein family, are critical components of the mitochondrial cytochrome bc1-cytochrome c oxidase supercomplex. *Mol Cell Biol* 32(8):1363–1373.
- Saks V, et al. (2006) Cardiac system bioenergetics: Metabolic basis of the Frank-Starling law. *J Physiol* 571(Pt 2):253–273.
- Smolenski RT, Lachno DR, Ledingham SJ, Yacoub MH (1990) Determination of sixteen nucleotides, nucleosides and bases using high-performance liquid chromatography and its application to the study of purine metabolism in hearts for transplantation. *J Chromatogr A* 527(2):414–420.
- Shimura D, et al. (2013) Metabolomic profiling analysis reveals chamber-dependent metabolite patterns in the mouse heart. *Am J Physiol Heart Circ Physiol* 305(4):H494–H505.
- Kemp GJ, Meyerspeer M, Moser E (2007) Absolute quantification of phosphorus metabolite concentrations in human muscle in vivo by 31P MRS: A quantitative review. *NMR Biomed* 20(6):555–565.
- Ford SR, et al. (1996) Use of firefly luciferase for ATP measurement: Other nucleotides enhance turnover. *J Biolumin Chemilumin* 11(3):149–167.
- Imamura H, et al. (2009) Visualization of ATP levels inside single living cells with fluorescence resonance energy transfer-based genetically encoded indicators. *Proc Natl Acad Sci USA* 106(37):15651–15656.
- Lopaschuk GD, Kelly DP (2008) Signaling in cardiac metabolism. *Cardiovasc Res* 79(2):205–207.
- Hattori F, et al. (2010) Nongenetic method for purifying stem cell-derived cardiomyocytes. *Nat Methods* 7(1):61–66.
- Forsythe JA, et al. (1996) Activation of vascular endothelial growth factor gene transcription by hypoxia-inducible factor 1. *Mol Cell Biol* 16(9):4604–4613.
- Wolf A, et al. (2011) Hexokinase 2 is a key mediator of aerobic glycolysis and promotes tumor growth in human glioblastoma multiforme. *J Exp Med* 208(2):313–326.
- Russell L, Forsdyke DR (1991) A human putative lymphocyte G0/G1 switch gene containing a CpG-rich island encodes a small basic protein with the potential to be phosphorylated. *DNA Cell Biol* 10(8):581–591.
- Zandbergen F, et al. (2005) The G0/G1 switch gene 2 is a novel PPAR target gene. *Biochem J* 392(Pt 2):313–324.
- Heckmann BL, Zhang X, Xie X, Liu J (2013) The G0/G1 switch gene 2 (G0S2): Regulating metabolism and beyond. *Biochim Biophys Acta* 1831(2):276–281.
- Dimroth P, von Ballmoos C, Meier T (2006) Catalytic and mechanical cycles in F-ATP synthases. Fourth in the Cycles Review Series. *EMBO Rep* 7(3):276–282.
- Senior AE (2007) ATP synthase: Motoring to the finish line. *Cell* 130(2):220–221.
- Walker JE (1998) ATP synthesis by rotary catalysis (Nobel Lecture). *Angew Chem Int Ed* 37:5000–5011.
- Yoshida M, Muneyuki E, Hisabori T (2001) ATP synthase—a marvellous rotary engine of the cell. *Nat Rev Mol Cell Biol* 2(9):669–677.
- Fujikawa M, Yoshida M (2010) A sensitive, simple assay of mitochondrial ATP synthesis of cultured mammalian cells suitable for high-throughput analysis. *Biochem Biophys Res Commun* 401(4):538–543.
- Adachi K, et al. (2007) Coupling of rotation and catalysis in F1-ATPase revealed by single-molecule imaging and manipulation. *Cell* 130(2):309–321.
- Itoh H, et al. (2004) Mechanically driven ATP synthesis by F1-ATPase. *Nature* 427(6973):465–468.
- Noji H, Yasuda R, Yoshida M, Kinosita K, Jr. (1997) Direct observation of the rotation of F1-ATPase. *Nature* 386(6622):299–302.
- Rondelez Y, et al. (2005) Highly coupled ATP synthesis by F1-ATPase single molecules. *Nature* 433(7027):773–777.
- Uchihashi T, Iino R, Ando T, Noji H (2011) High-speed atomic force microscopy reveals rotary catalysis of rotorless F1-ATPase. *Science* 333(6043):755–758.
- Giorgio V, et al. (2009) Cyclophilin D modulates mitochondrial F0F1-ATP synthase by interacting with the lateral stalk of the complex. *J Biol Chem* 284(49):33982–33988.
- Siderovski DP, Blum S, Forsdyke RE, Forsdyke DR (1990) A set of human putative lymphocyte G0/G1 switch genes includes genes homologous to rodent cytokine and zinc finger protein-encoding genes. *DNA Cell Biol* 9(8):579–587.
- Yamada T, Park CS, Burns A, Nakada D, Lacorazza HD (2012) The cytosolic protein G0S2 maintains quiescence in hematopoietic stem cells. *PLoS ONE* 7(5):e38280.
- Welch C, et al. (2009) Identification of a protein, G0S2, that lacks Bcl-2 homology domains and interacts with and antagonizes Bcl-2. *Cancer Res* 69(17):6782–6789.
- Kobayashi S, et al. (2008) Expression profiling of PBMC-based diagnostic gene markers isolated from vasculitis patients. *DNA Res* 15(4):253–265.
- Yang X, et al. (2010) The G(0)/G(1) switch gene 2 regulates adipose lipolysis through association with adipose triglyceride lipase. *Cell Metab* 11(3):194–205.

Supporting Information

Kioka et al. 10.1073/pnas.1318547111

SI Materials and Methods

Reagents and Antibodies. Reagents in the report were purchased as follows: oligomycin A (Sigma-Aldrich), 2-deoxyglucose (Sigma-Aldrich), and Mitotracker Red (Invitrogen). Antibodies were purchased as follows: anti- F_0F_1 -ATP synthase complex (complex V; MitoSciences); anti- F_0F_1 -ATP synthase subunits F_1 - α (Proteintech), F_1 - β (Invitrogen), F_1 - γ (Abcam), and F_0 -b (Proteintech); Ndufs2 (Abcam); Ndufs3 (Abcam); Sdha (Abcam); Sdhb (Abcam); Uqcrrf1 (Abcam); Uqcrc1 (Abcam); Cox4 (Abcam); Cox5a (Abcam); adenine nucleotide translocase 1 (Abcam); anti- α -tubulin (Sigma-Aldrich); anti-Flag M2 (Sigma-Aldrich); HRP-coupled sheep anti-rabbit and anti-mouse IgG (Cappel); and Alexa 488- and Alexa 568-labeled secondary antibodies (Invitrogen). Anti- F_0F_1 -ATP synthase c subunit antibody is generated by immunization with peptide corresponding to human c subunit. Polyclonal antibodies against G0/G1 switch gene 2 (G0s2) were generated by immunization with peptide corresponding to mouse G0s2 amino acid sequence (amino acids 93–103, CSRALSLRQHAS or amino acids 49–103, PFTAASRLRDQEAADVVELREACEQQSLHKQ-ALLAGGKAOEATLCSRALSLRQHAS) in rabbit. Monoclonal antibody against G0s2 was generated by immunization with peptide corresponding to mouse G0s2 amino acid sequence (amino acids 93–103) in mouse.

Cell Culture and Transfection. Cardiomyocytes obtained from 1- or 2-d-old Wistar rats were prepared and cultured in DMEM (Invitrogen) containing 10% (vol/vol) FBS as described previously (1). Hypoxic condition (1% O_2) was provided by MCO-5M multigas incubator (Sanyo) unless described otherwise. HeLa and 293T cells were maintained in DMEM containing 10% FBS and 1% penicillin streptomycin. Transient transfection was performed using FuGENE 6 (Promega) for HeLa or Lipofectamine 2000 (Invitrogen) for 293T cells.

Constructs. The coding sequence of mouse G0s2 gene (NM_008059.3) was amplified by PCR from mouse heart cDNA library and subcloned into pENTR/D-TOPO (Invitrogen) (pENTR-G0s2) using Gateway Technology. The deletion mutants of N-terminal, hydrophobic domain (HD), and C-terminal portions of G0s2 (Δ N, Δ HD, and Δ C, respectively) were generated by PCR using pENTR-G0s2 as a template. The pENTR-G0s2 clones were recombined into pEF-DEST51/Flag, generating C-terminally Flag-tagged G0s2 (G0s2-Flag). For adenoviral construction, we used ViraPower Adenoviral Expression System (Invitrogen) for overexpression and BLOCK-iT Adenoviral RNAi Expression System for shRNA (Invitrogen) according to the manufacturer's instructions. For shRNA construction, oligonucleotides containing the target sequence were subcloned into pENTR-U6 and recombined into pAd/BLOCK-iT-DEST. The targets of shRNA for G0s2 (#1) and (#2) are the coding region and 3'-UTR of rat G0s2, respectively. The used sequences are as follows:

- shRNA for G0s2 (#1), GGAAGCTAGTGAAGCTGTACG;
- shRNA for G0s2 (#2), GCAGCATGCACTGTGATTTGT; and
- shRNA for LacZ, GCTACACAAATCAGCGATTT.

RNA Extraction and Quantitative RT-PCR. Total RNA was extracted from cardiomyocytes using RNA-Bee Reagent (Tel-Test) and converted to cDNA using the Omniscript RT Kit (Qiagen) according to the manufacturer's instructions. Quantitative RT-PCR was performed with TaqMan technology and StepOnePlus

Real-Time PCR Systems (Applied Biosystems). All of the samples were processed in duplicate. The level of each transcript was quantified by the threshold cycle method using *Actb* as an endogenous control.

Hybridization to Oligonucleotide Arrays. cDNA was synthesized from total RNA and annealed to a T7-oligo-dT primer. Reverse transcription was done with SuperScript II reverse transcriptase. Second-strand cDNA synthesis was done with DNA polymerase I with the appropriate reagents. Synthesis of biotin-labeled cRNA was done by in vitro transcription with the MEGAscript T7 IVT Kit (Ambion). The cRNA was fragmented and hybridized to GeneChip Rat Genome 230 2.0 arrays (Affymetrix). Hybridization, probe washing, staining, and probe array scan were done according to the manufacturer's instructions.

Microarray Data Analysis. Data analysis and normalization were performed by GeneSpring Gx1.5 bioinformatics software (Agilent Technologies), excluding the probe sets with raw signal (<50) in all arrays. After applying quality filtering to diminish background noise created by nonsignificant gene probes, one-way ANOVA test was applied to the filtered gene list, resulting in a group of genes with significant *P* values. Heat maps were generated by GeneSpring Gx1.5.

Purification of G0s2 Binding Protein. Cardiomyocytes were lysed with CHAPS lysis buffer of 30 mM Mops, pH 7.5, 150 mM NaCl, 10% (vol/vol) glycerol, 1 mM EDTA, 10 mM NaF, 25 mM β -glycerophosphate, 1 mM orthovanadate, 1% CHAPS, and protease inhibitor mixture (Nacalai-tesque). The lysates were immunoprecipitated with anti-Flag M2-agarose (Sigma-Aldrich) at 4 °C for 1 h. After extensive washing, the proteins were eluted with 250 μ g/mL Flag peptide. The eluate was electrophoresed on 4–12% NuPAGE Bis-Tris gel and stained with silver. Gel pieces, including specific bands from the silver-stained gels, were excised, digested with trypsin, and analyzed with Q-TOF tandem mass spectrometer SYNAPT G2 (Waters).

Immunoprecipitation. Cells were lysed with CHAPS lysis buffer as described above. For immunoprecipitation of endogenous G0s2, the cell lysates underwent the two pre-clear steps: protein G-Sepharose (GE Healthcare) for 30 min followed by anti-rabbit IgG plus Dynabeads M-280 anti-rabbit IgG (Invitrogen) for 30 min at 4 °C. The pre-cleared samples were immunoprecipitated with anti-G0s2 antibody and Dynabeads M-280 anti-rabbit IgG for 2 h at 4 °C. For immunoprecipitation of F_0F_1 -ATP synthase, the cell lysates were immunoprecipitated with anti- F_0F_1 -ATP synthase complex antibody and Dynabeads M-280 anti-mouse IgG (Invitrogen) overnight at 4 °C without a pre-clear step. After washing, the bound proteins were eluted with SDS/PAGE sample buffer.

FRET-Based Measurement of Mitochondrial Matrix and Cytosolic ATP Concentration. Cardiomyocytes were infected with adenovirus encoding FRET-based ATP indicators AT1.03 or mit-AT1.03 to measure changes in cytosolic or mitochondrial ATP concentrations, respectively. Wide-field observations of the cells were performed on an Olympus IX-81 inverted fluorescence microscope (Olympus) using a PL APO 60X, 1.35 N.A., oil immersion objective lens (Olympus). Fluorescence emission from ATP indicator based on ϵ -subunit for analytical measurements (ATeam) was imaged by using a dual cooled CCD camera (ORCA-D2; Hamamatsu Photonics) with a dichroic mirror (510 nm) and two

emission filters (483/32 nm for CFP and 542/27 nm for YFP; A11400-03; Hamamatsu Photonics). Cells were illuminated using the CoolLED *pE-1* excitation system (CoolLED) with a wavelength of 425 nm. Cells were maintained on a microscope at 37 °C using a stage-top incubator (Tokai Hit). For the control of oxygen concentration during time-lapse imaging, a digital gas mixer for stage-top incubator GM8000 (Tokai Hit) was used to create hypoxic (1% O₂) and normoxic (20% O₂) conditions. A laser-based Z drift compensator (IX81-ZDC; Olympus) was used to minimize the focus drift during the time-lapse imaging. Image analysis was performed using MetaMorph (Molecular Devices). The YFP/CFP emission ratio was calculated by dividing pixel by pixel a YFP image with a CFP image after background subtraction.

Confocal Microscopy. After treated with 50 nM Mitotracker Red for 4 h, cardiomyocytes were fixed with 100% methanol for 15 min at -20 °C, permeabilized with 0.01% Triton X-100 in PBS at room temperature for 10 min, and immunostained with a primary antibody. For secondary reaction, an Alexa 488- or 568-labeled secondary antibody (Invitrogen) was used. Images were taken by TCS SP5 confocal microscope using an HCX PL APO 63X, 1.40 N.A., oil immersion objective lens (Leica) or FV1000D confocal microscope using a PL APO 60X, 1.35 N.A., oil immersion objective lens (Olympus).

Purification of Recombinant G0s2 Protein. The full-length mouse G0s2 cDNA was subcloned into pMAL-c2e (New England Biolabs), and then, the coding sequence of maltose-binding protein (MBP)-G0s2 was cloned into pET21a vector (pET21a-MBP-G0s2; Novagen). pET21a-MBP-G0s2 was transformed into BL21-Star (DE3; Invitrogen), and the expression of MBP-G0s2 protein was induced by the addition of 0.5 mM isopropyl β -D-1-thiogalactopyranoside. The cells were lysed by sonication, and the MBP-G0s2 protein was purified with amylose resin (New England Biolabs) followed by elution with the buffer (30 mM Mops, pH 7.5, 150 mM KCl, 0.01% *n*-dodecyl- β -D-maltoside, 20 mM maltose). The eluted protein was concentrated using Amicon Ultra-4 3K (Millipore) to remove maltose.

Pull-Down Assay. Preparation of submitochondrial particles from bovine heart mitochondria and subsequent purification of F₀F₁-ATP synthase were performed as described previously (2). Recombinant MBP fusion protein (4 μ g) and purified F₀F₁-ATP

synthase (16 μ g) were incubated at 37 °C for 30 min in the presence of 1% CHAPS and then batch-bound to amylose resin at 4 °C for 1 h. After extensive washing, proteins were eluted with SDS/PAGE sample buffer.

Cell Viability. Cells (9×10^4) of cardiomyocytes seeded on 12-well plates were infected with adenovirus shRNA for 48 h or adenovirus LacZ or G0s2 for 24 h, and then, they were exposed to hypoxic condition for 18 h. Hypoxic condition (less than 0.1%) was achieved by using the AnaeroPack System (Mitsubishi Gas Chemical, Inc.). After hypoxia, cells were stained with 2 μ g/mL propidium iodide (Sigma) and 2 μ g/mL Hoechst 33342 (Dojin Chemical, Inc.) at 37 °C for 30 min. The stained nuclei were then visualized using a BZ-8000 Fluorescent Microscope (KEYENCE). Four fields in the plates (~400 cells per field) were counted, and data were expressed as percentage of propidium iodide-positive nuclei/total nuclei.

Measurement of ATP Synthesis Activity of Permeabilized Cells. ATP synthesis activities of HeLa cells were measured as described previously (3). Digitonin (50 μ g/mL) was used to permeabilize the plasma membrane of cardiomyocytes.

Measurement of Intact Cellular Respiration. Oxygen consumption rate of cardiomyocytes was measured using an XF96 Extracellular Flux Analyzer (Seahorse Bioscience) in unbuffered DMEM assay medium supplemented with 1 mM pyruvate, 2 mM glutamate, and 25 mM glucose after 60 min equilibration according to the manufacturer's recommendations. The continuous measurements of oxygen consumption rate were collected over time under basal condition and in response to oligomycin A (1 μ g/mL) and rotenone (100 nM) plus antimycin A (100 nM) or carbonyl cyanide-4-(trifluoromethoxy)-phenylhydrazone (0.5 μ M).

Animals. All procedures were performed in conformity with the *Guide for the Care and Use of Laboratory Animals* (4) and approved by the Osaka University Committee for Laboratory Animal Use.

Statistical Analyses. Our data are expressed as means \pm SEMs of at least three independent experiments. The two-tailed Student *t* test was used to analyze differences between two groups unless otherwise noted. *P* < 0.05 was considered statistically significant.

1. Seguchi O, et al. (2007) A cardiac myosin light chain kinase regulates sarcomere assembly in the vertebrate heart. *J Clin Invest* 117(10):2812-2824.
2. Chen R, Runswick MJ, Carroll J, Fearnley IM, Walker JE (2007) Association of two proteolipids of unknown function with ATP synthase from bovine heart mitochondria. *FEBS Lett* 581(17):3145-3148.

3. Fujikawa M, Yoshida M (2010) A sensitive, simple assay of mitochondrial ATP synthesis of cultured mammalian cells suitable for high-throughput analysis. *Biochem Biophys Res Commun* 401(4):538-543.
4. National Institutes of Health (1996) *Guide for the Care and Use of Laboratory Animals*, NIH Publication 85-23 (National Institutes of Health, Bethesda).

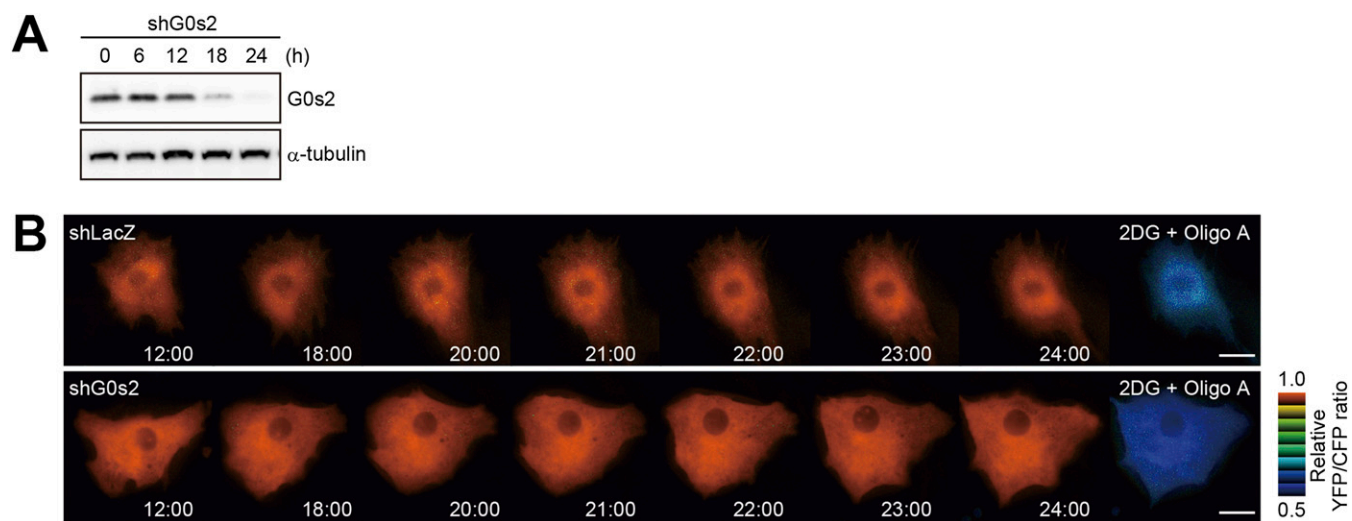


Fig. S3. G0s2 does not affect cytosolic ATP concentration. (A) Time course of G0s2 knockdown in cardiomyocytes. (B) Sequential YFP/CFP ratiometric pseudocolored images of Cyto-ATeam fluorescence in cardiomyocytes expressing shRNA for LacZ (shLacZ) or G0s2 (shG0s2; #2). Inhibitors of glycolysis [10 mM 2-deoxyglucose (2DG)] and F_0F_1 -ATP synthase [1 μ g/mL oligomycin A (Oligo A)] were added at the end of the time-lapse imaging to diminish the cytosolic ATP concentration. The indicated time represents the period after adenovirus infection.

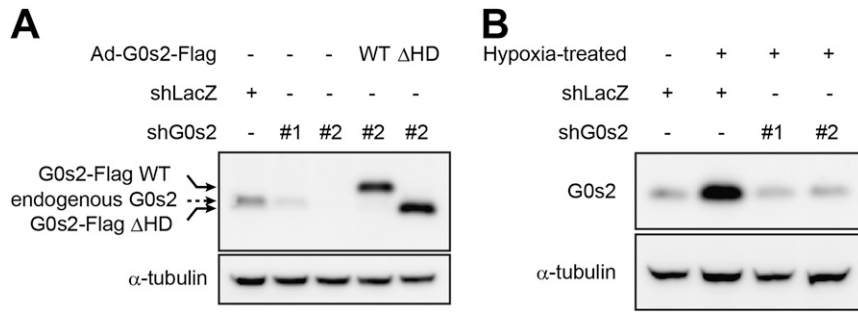
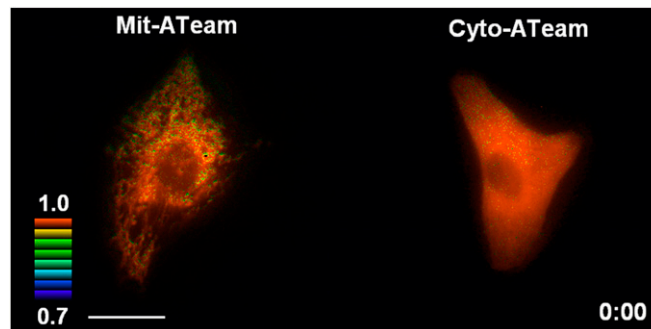


Fig. S7. (A) Immunoblotting of G0s2-depleted cardiomyocytes rescued by overexpression of G0s2-Flag. (B) Immunoblotting of G0s2-depleted cardiomyocytes under hypoxic conditions. Cardiomyocytes expressing the indicated adenovirus were exposed to hypoxia (1% O₂) for 4 h. The cell lysates were subjected to immunoblotting with anti-G0s2 or α-tubulin antibodies.

Table S1. The identification of proteins that specifically bound to G0s2 by MS

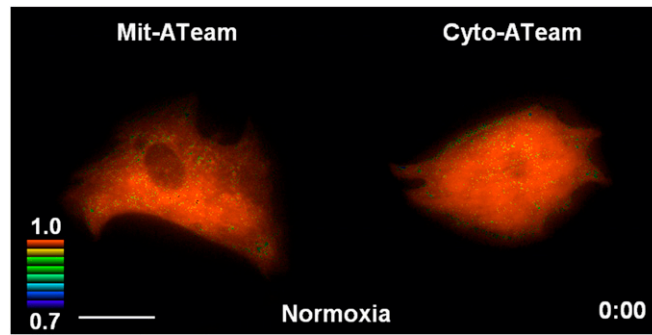
SwissProt accession	Description	Molecular mass (Da)	PLGS score	Peptides	Coverage (%)
ATPA_RAT	ATP synthase subunit-α mitochondrial	59,716	10.5798	10	18.9873
ATPB_RAT	ATP synthase subunit-β mitochondrial	56,318	10.5798	11	24.1966
ATPG_RAT	ATP synthase γ-chain	32,975	10.523	2	7.3826
ATP5F1_RAT	ATP synthase subunit b mitochondrial	28,850	10.5796	2	3.9063
ATPO_RAT	ATP synthase subunit O mitochondrial	23,382	10.5796	5	23.9437
ATP5H_RAT	ATP synthase subunit d mitochondrial	18,751	10.5796	2	13.0435
ATPD_RAT	ATP synthase subunit-δ mitochondrial	17,584	10.5796	2	13.6905
D3ZAF6_RAT	ATP synthase H transporting mitochondrial Fo complex subunit f isoform 2	10,972	10.5796	2	22.3404

A PLGS score was calculated by the Protein Lynx Global Server (PLGS; PLGS 2.4) software using a Monte Carlo algorithm to analyze all of the available MS data; this score is a statistical measure of the accuracy of assignment. A higher score implies a greater confidence in the identity of the protein.



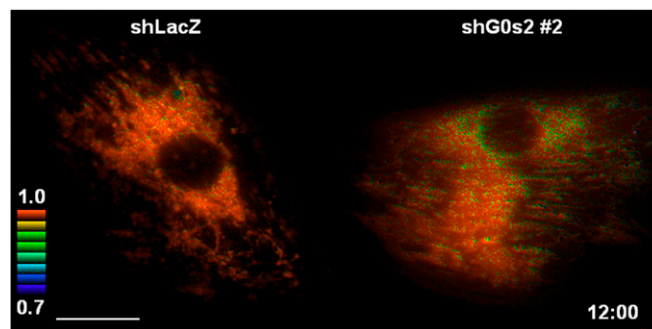
Movie S1. Time-lapse imaging of the (Left) Mit-ATeam and (Right) Cyto-ATeam fluorescence in cardiomyocytes before and after the addition of oxidative phosphorylation inhibitor. YFP/CFP ratiometric pseudocolored images were obtained every 1 min for 25 min. Oligomycin A (0.01 μg/mL), an inhibitor of F₀F₁-ATP synthase, was added at time point 5 min. (Scale bar: 20 μm.)

[Movie S1](#)



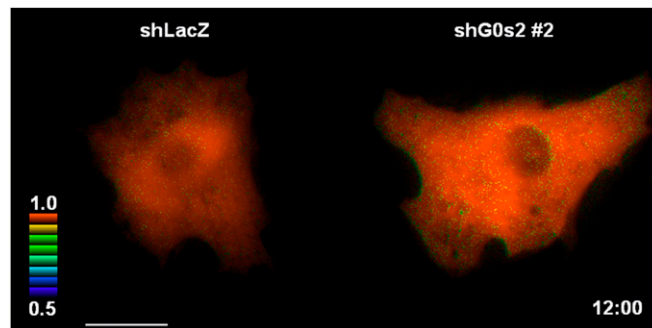
Movie S2. Time-lapse imaging of the (Left) Mit-ATeam and (Right) Cyto-ATeam fluorescence in cardiomyocytes exposed to hypoxia. YFP/CFP ratiometric pseudocolored images were obtained every 30 min for 3 h. Cells are exposed to 1% hypoxia from the time point 30 min. (Scale bar: 20 μ m.)

[Movie S2](#)



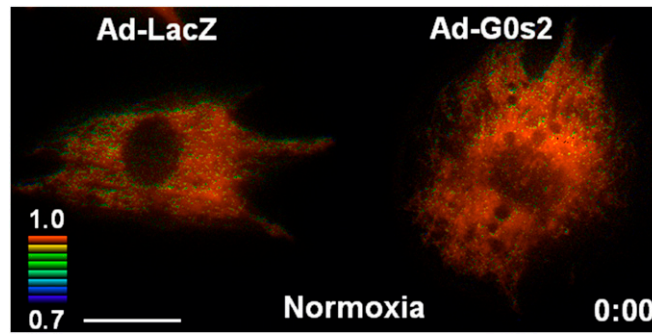
Movie S3. Time-lapse imaging of the Mit-ATeam fluorescence in cardiomyocytes that expressed (Left) shLacZ or (Right) shG0s2 #2. YFP/CFP ratiometric pseudocolored images were obtained every 1 h for 12 h. An inhibitor of F_0F_1 -ATP synthase (1 μ g/mL oligomycin A) was added at the end of time-lapse imaging to completely inhibit ATP synthesis. (Scale bar: 20 μ m.) The indicated times designate the periods after adenovirus infection.

[Movie S3](#)



Movie S4. Time-lapse imaging of the Cyto-ATeam fluorescence in cardiomyocytes that expressed (Left) shLacZ or (Right) shG0s2 #2. YFP/CFP ratiometric pseudocolored images were obtained every 1 h for 12 h. Inhibitors of both glycolysis (10 mM 2-deoxyglucose) and F_0F_1 -ATP synthase (1 μ g/mL oligomycin A) were added at the end of the time-lapse imaging to decrease the cytosolic ATP concentration. (Scale bar: 20 μ m.) The indicated times designate the periods after adenovirus infection.

[Movie S4](#)



Movie S5. Time-lapse imaging of the Mit-ATeam fluorescence in cardiomyocytes that expressed (*Left*) LacZ or (*Right*) G0s2 during hypoxia and reoxygenation. YFP/CFP ratiometric pseudocolored images were obtained every 30 min for 4 h. The cells were exposed and imaged under hypoxic condition from the time point 30 min to 4 h. (Scale bar: 20 μ m.)

[Movie S5](#)